



# NISSEQUOGUE RIVER STATE PARK

PRELIMINARY CONCEPT DESIGN STUDIES

Photo Credit: John Brian Silverio (<http://silverph.com/>)

SARATOGA  
ASSOCIATES

TABLE OF CONTENTS

Memo ..... 1  
 Context map ..... 2  
 Concept diagram ..... 4  
 Precedent images ..... 6  
   Architecture / Conference Center ..... 7  
   Sustainable Design ..... 8  
   Boathouse Cafe / Restaurant ..... 9  
   Marina ..... 10  
   Horse Stable ..... 11  
   Bus Shelter ..... 12  
   Pedestrian Bridge ..... 13  
   Nature Trail ..... 14  
   Light Fixture ..... 15  
   Site Furniture ..... 16  
   Bio-Swale / Porous Pavement ..... 17  
   Cultural / Arts ..... 18  
   Environmental Graphics / Signage ..... 19  
   Pavements ..... 20

MEMO

The Chamber of Commerce memo has some ideas for use on the NSRP site. Other ideas for other uses/organizations include:

**CORNELL COOPERATIVE EXTENSION**

- <http://counties.cce.cornell.edu/suffolk/>
- > 4-H camp
  - > Meeting space for 4-H clubs (and boy scouts, civic groups, school groups, etc.)
  - > Horticulture/Gardening Classes
  - > Health and Nutrition Education
  - > Environmental Learning
  - > Parenting classes

The CCE has many facilities throughout Nassau and Suffolk where various types of courses and camps are offered; many of which are in Riverhead and Yaphank. The NSRP site could offer classes at a community center (see below) while 4-H camp could be held at the camping facilities. Could we include a pavilion near the camping area? The park plan could include a greenhouse as an appropriate location for horticulture classes.

**COMMUNITY CENTER**

It seems that the Kings Park senior citizens club currently meets at the VFW. Perhaps some space at the Park could be allocated for a new center for senior activities (or for all ages, actually).  
 Necessary Space: +/-20,000 sf

**COMMUNITY ATHLETIC COMPLEX/FACILITY**

Necessary Space: 20-40 acres. The park could accommodate an athletic complex that is large enough to host tournaments for swimming, basketball, etc.

**CULTURAL FACILITY**

- > York Hall. A cultural facility is a building primarily used for the production, presentation or exhibition of cultural disciplines such as music, dance, theater, etc. Adaptive reuse of existing structures is a common approach to creating cultural facilities. The area around York Hall could be situated as a "Cultural Compound" surrounded by ancillary uses and open space.
- > Art/Cultural Colony.

**EQUESTRIAN CENTER**

Potential elements of an equestrian center would include boarding stalls, training rings, outdoor and indoor show arenas, and grass fields. A facility for trainers may also be appropriate. A typical horse barn would be constructed of wood, and feature stalls for horses and storage areas for hay and grain (may include a loft). A traditional barn is approximately 5,000 sf although horse barns may be smaller.

**OTHER UNIVERSITY FACILITIES/EDUCATIONAL PROGRAMS**

- > SUNY Farmingdale. The school has a program in ornamental horticulture. Although their existing Teaching Gardens look fairly extensive, perhaps they would be interested in working in some areas of NSRP as well.
- > SUNY Stony Brook. The university has recently expanded to another campus in Southampton and is in discussions to purchase Touro Law School, so they may not need space at NSRP.
- > Suffolk Community College. SCC currently has three campuses in Selden, Brentwood and Riverhead. Unsure if any of their degree programs would benefit from space within the state park. SCC has a Culinary Arts and Hospitality Center in Riverhead; perhaps demand is sufficient for a second location in Kings Park?
- > Long Island University. LIU's CW Post campus is only 30 minutes from Kings Park and offers a variety of Continuing Ed programs. If the park included a building with public meeting space, perhaps LIU would be interested in offering one-day or weekend courses and seminars.
- > Touro College. Touro currently has two Long Island campuses – the school of Health Sciences in Bay Shore and its law school in Central Islip (the latter of which Stony Brook may purchase). Like LIU, Touro could be contacted about their interest in offering continuing education classes if space at NSRP is available.
- > Continuing education for adults
- > College prep for high school students
- > Interpretive trails/systems/demonstrative facilities

**CONFERENCE CENTER**

Long Island needs more conference facilities that are accessible by train (for example, Vision Long Island's 2007 Smart Growth Summit was held at a hotel accessible only by car, and when I called to ask why was told that they couldn't find a location near a train station). The demand for such a facility that could hold groups of various sizes exists, and could be accessed via the Kings Park Rail station, which is less than a mile away from the proposed Main Entrance; perhaps a shuttle service could be offered as well.

The conference center will need to be designed to fit in with the park atmosphere and environment rather than face inward.

**LIBRARY**

The Kings Park branch of the Smithtown Library is located approximately 0.5 miles from the park. The Library is currently floating an expansion program and intends to renovate its existing facility. If the bond is rejected at the polls on March 4, the library may want to utilize some community space at NSRP as well.

**RESTAURANT**

Small café near pond/ice skating rink?  
 Larger restaurant near boathouse?  
 Reception facility on bluff overlooking the sound?

**TRANSPORTATION & ACCESS**

- > Bicycle storage facilities; bike parking
- > Traffic calming/bump-outs, textured surfaces (discourage non-visitors from cutting through the park)
- > Connections to Kings Park train station/shuttle
- > Interior jitney service with designated stops
- > Designated parking areas to limit interior vehicular traffic

**OTHER USES**

- > The hospital once had its own farm, and it might be interesting to revive some of its historic agriculture uses (or perhaps viticulture, which was also suggested in the Chamber memo); one of the old farm buildings would be a nice café or wine tasting room adjacent to the trail leading up to the potters field area with its views to Long Island Sound. If

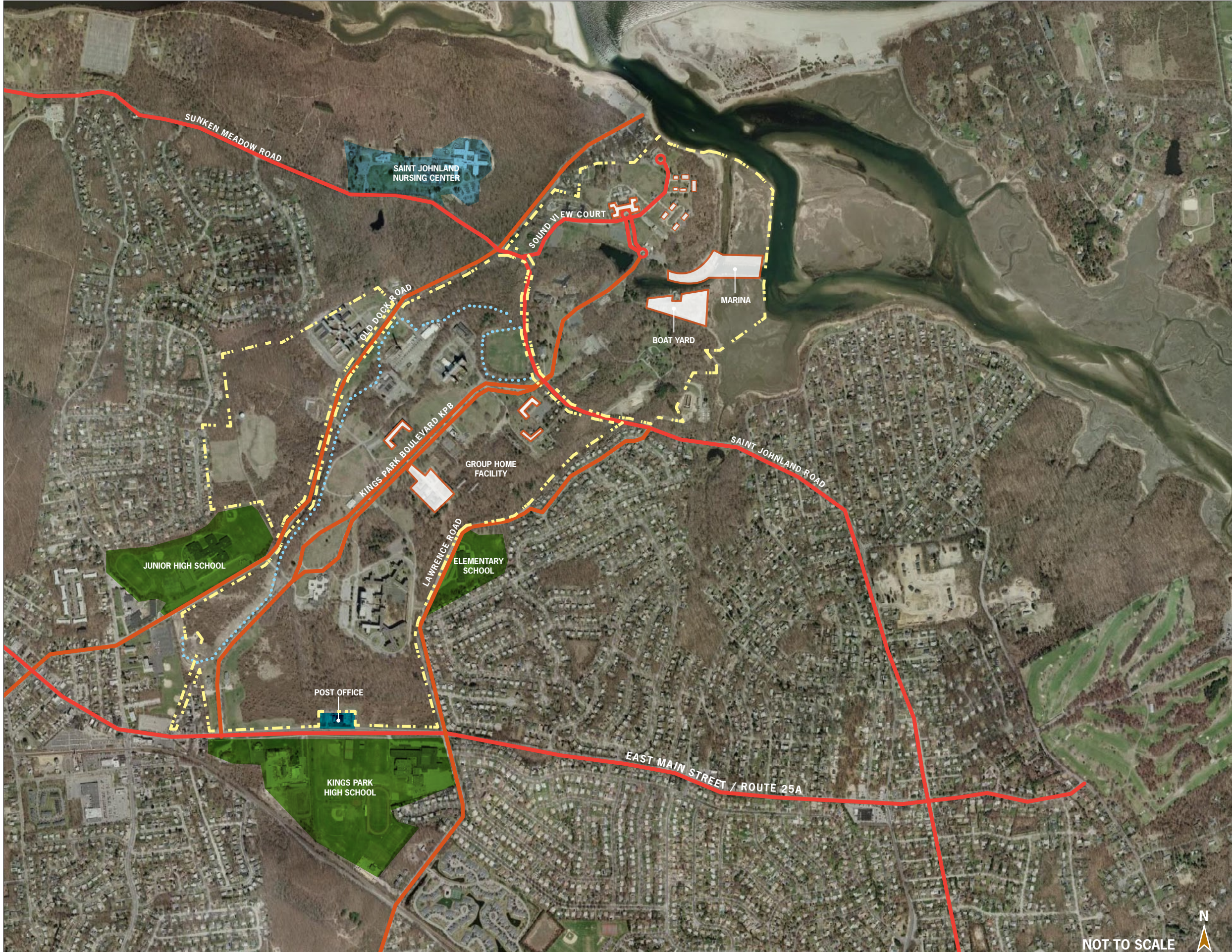
that trail can be used for cross-country skiing, this would also be a nice place for skiers to stop.

- > Community gardens
- > Demonstration gardens
- > Greenhouses to facilitate horticultural and agricultural activities
- > Dog runs
- > Bocce courts
- > Playgrounds
- > Group picnic areas
- > Trails with interest nodes
- > Informal sledding hill near existing water tank
- > Area for greenmarket on weekends; maybe the ice skating rink in spring/summer/fall (or backdrop for amphitheater area)
- > Trails with interpretive signage (esp. at locations such as old St. Johnland train station)
- > The Town of Smithtown would like 20 ac for leaching fields

**SUSTAINABLE DESIGN**

- > Incorporation of alternative energy
  - Solar
  - Geothermal
  - Wind
  - Biofuel/methane gas generation/capture
- > Porous pavements
- > Restoration of natural ecosystems
- > Use of bioswales, rain gardens, settling ponds for bioremediation to manage stormwater and remediate before re-entering the natural system
- > Solar power lighting
- > Recycling grey water
- > Photoremediation demonstration

# CONTEXT MAP



# CONTEXT MAP

Nissequogue River State park

February, 15 2008

## KEY

- SCHOOLS
- SAINT JOHN LAND NURSING CENTER
- POST OFFICE
- SITE LIMITS
- ROADS
- RECREATION TRAIL

PROJECT #08012 Nissequogue River SP  
 Copyright © 2008 Saratoga Associates. All Rights Reserved.  
 This map is computer generated using data acquired by Saratoga Associates from various sources and is intended only for reference, conceptual planning and presentation purposes. This map is not intended for and should not be used to establish boundaries, property lines, location of objects or to provide any other information typically needed for construction or any other purpose when engineered plans or land surveys are required.

M:\PROJECTS\2008\08012 Nissequogue River SP\C.3\Graphics

**SARATOGA**  
**ASSOCIATES**

Landscape Architects, Architects,  
 Engineers, and Planners, P.C.  
 NEW YORK CITY > SARATOGA SPRINGS

**KINGS PARK**  
**CIVIC ASSOCIATION**

NOT TO SCALE

# CONCEPT DIAGRAM



# CONCEPT DIAGRAM

Nissequogue River State Park

February, 15 2008

## KEY

- WOODLAND BUFFER / NATURE TRAILS
- RECREATION ZONE
- SPA / RETREAT
- ARTS / CULTURE
- CONFERENCE CENTER
- EDUCATION
- ACCESS NODE
- VIEW

PROJECT #08012 Nissequogue River SP  
 Copyright © 2008 Saratoga Associates. All Rights Reserved.  
 This map is computer generated using data acquired by Saratoga Associates from various sources and is intended only for reference, conceptual planning and presentation purposes. This map is not intended for and should not be used to establish boundaries, property lines, location of objects or to provide any other information typically needed for construction or any other purpose when engineered plans or land surveys are required.  
 M:\PROJECTS\2008\08012 Nissequogue River SPC.3\Graphics

**SARATOGA ASSOCIATES**

Landscape Architects, Architects,  
 Engineers, and Planners, P.C.  
 NEW YORK CITY > SARATOGA SPRINGS

**KINGS PARK CIVIC ASSOCIATION**

NOT TO SCALE

- SAINT JOHN LAND NURSING CENTER
- NATURE TRAILS
- CAMPING
- RETREAT / SPA
- PARK ADMINISTRATION BUILDING
- RESTORED RESERVOIR POND
- MARINA
- BOATHOUSE RESTAURANT
- ARTIST STUDIO & CAFE
- ARTS / CULTURE ZONE
- SAINT JOHN LAND NURSING CENTER
- GREENHOUSE & ASSOCIATED USES
- RELOCATE MAINTENANCE SHED
- RECREATION
- CONFERENCE / CONVENTION CENTER
- CAMPING
- ADMINISTRATOR'S RESIDENCE
- NATURE TRAILS
- NATURE TRAILS
- EQUESTRIAN CENTER
- FIREHOUSE / KPPC MUSEUM
- ARTS / CULTURE ZONE
- SCENIC VIEWS
- POTTERS FIELD
- GROUP HOME FACILITY TO REMAIN
- RECREATION FIELDS
- POND / FOUNTAIN / OUTDOOR SKATING RINK
- ALTERNATE ENTRANCE
- RECREATION CENTER
- EDUCATIONAL USE
- NATURE TRAILS
- GROUP HOME FACILITIES TO REMAIN
- MAIN ENTRANCE